

DARDA®
CYLINDERS 00-9, 00-12
AND
06-200 COMMANDING VALVE

NOTE:

ALWAYS INDICATE PART NUMBER WHEN ORDERING PARTS.

ALWAYS INDICATE THE SERIAL NUMBER OF THE CYLINDER OR PUMP WHEN CORRESPONDING OR ORDERING PARTS.

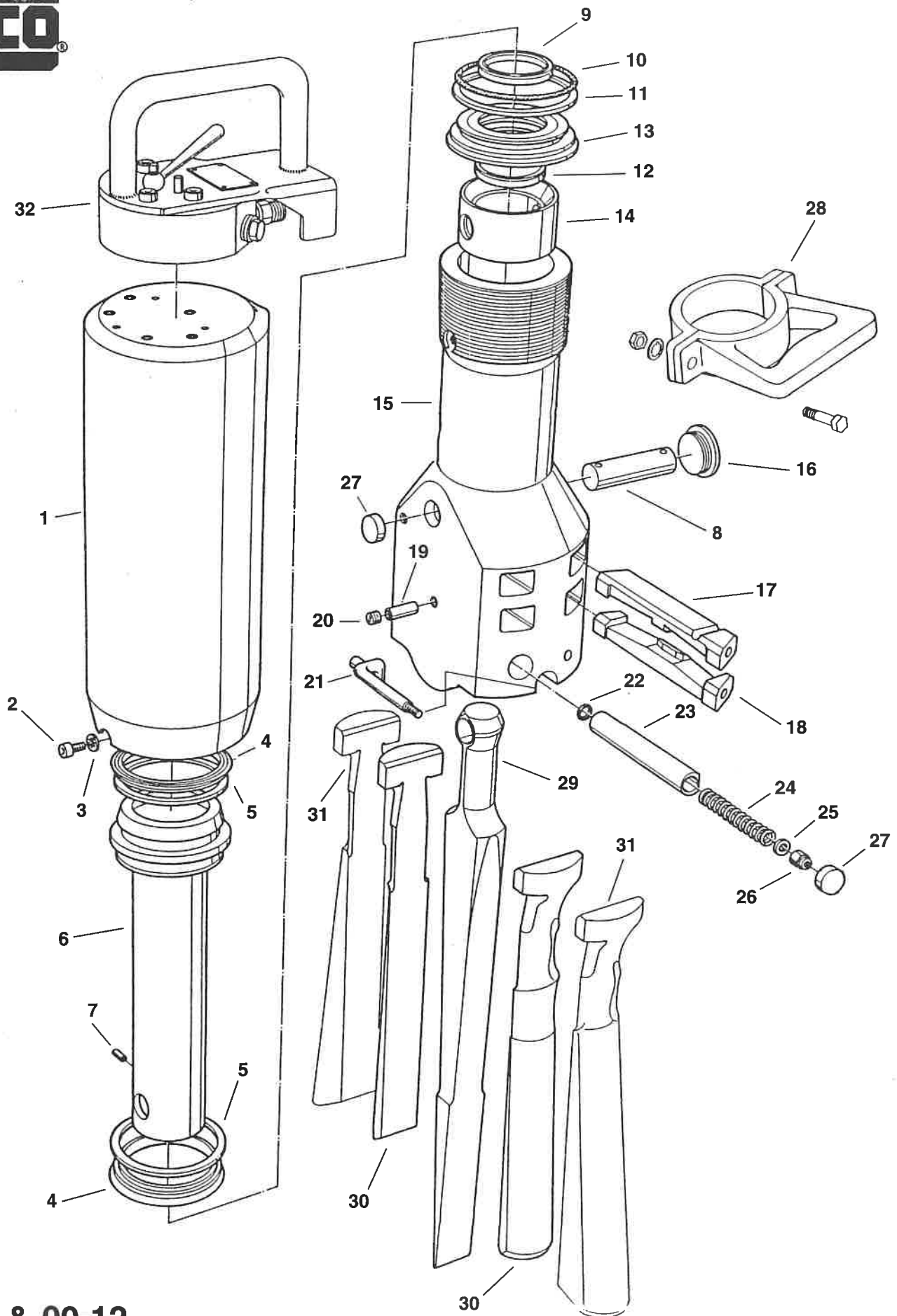


ELCO INTERNATIONAL, INC.

111 Van Riper Avenue • Elmwood Park, New Jersey 07407

Telephone: (201) 797-4644 • 1-800-631-3816

Fax: (201) 797-0823



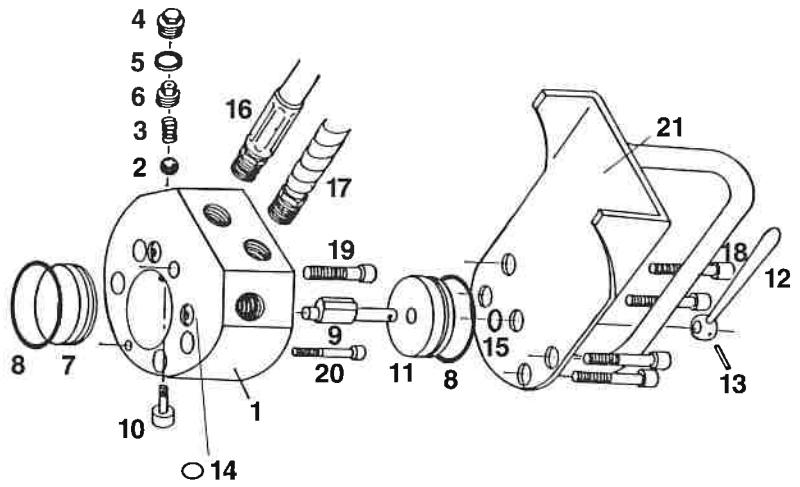
00-9 & 00-12

ITEM NO.	PART DESCRIPTION	NO. REQ'D	00-9 PART NO.	00-12 PART NO.
1	Upper Cylinder Shell	1	001-9	001-12
2	Lock Screw	2	0069	0069
3	Washer	2	0084	0084
4	Support Piston Seal	2	0062-9*	0062-12**
5	Piston Seal	2	0063-9*	0063-12**
6	Piston Rod	1	0046-9	0046-12
7	Pin	1	0080	0080
8	Plug Pin	1	0094-9	0094-12
9	Stuffing Box Seal Ring	1	0066-9*	0066-12**
10	O-Ring	1	0060-9*	0060-12**
11	Support Ring	1	0079-9*	N/A
12	Dirt Wiper	1	0076-79*	0076-12**
13	Stuffing Box	1	004-9	004-12
14	Guide Ring	1	0048-9	0048-12
15	Lower Cylinder Shell	1	002-9	002-12
16	Screw Plug	1	0093-78S9	0093-12
17	Upper Wear Plate	2	007-9	007-7812
18	Lower Wear Plate	2	008-9	008-7812
19	Lock Pin	4	0101	0101
20	Screw	4	0099	0099
21	Feather Lock Lever	2	0092	0092
22	O-Ring	2	0090	0090
23	Sleeve	2	0089	0089
24	Spring	2	0088	0088
25	Washer	2	0087	0087
26	Nut	2	0086	0086
27	Plastic Plug	3	0085	0085
28	Handle Set-Complete	1	017-9	017-12
29	Plug	1	010-9	010-12
30	Feather	2	011-9	011-812
31	Enlarging Feather	2	011-93	011-8123
32	Command Valve	1	06-200	06-200

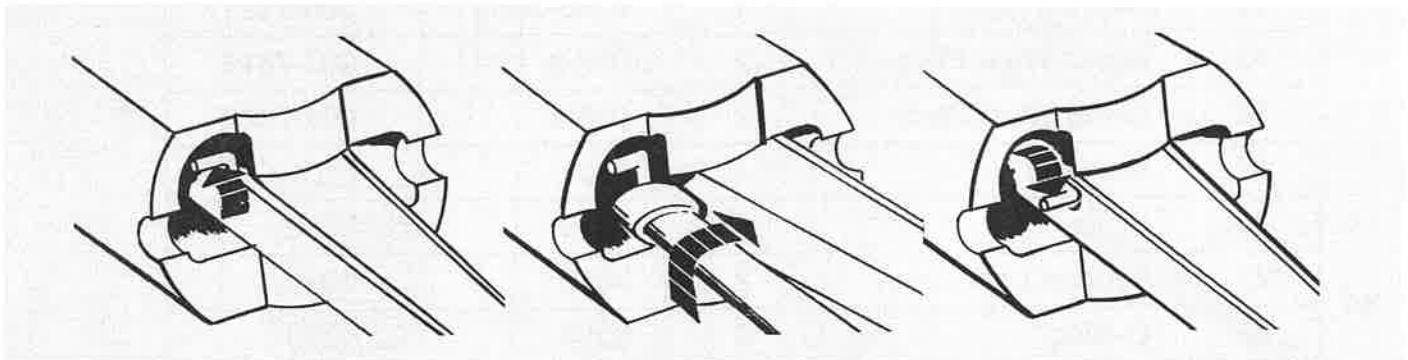
*These Parts Are Included in Repair Kit 08-9

**These Parts Are Included in Repair Kit 08-12

ITEM	PART NO.	DESCRIPTION	NO. REQ.
1	0610	Command Valve body	1
2	0611	Steel Ball*	2
3	0612	Spring *	2
4	0613	Screw Cover	2
5	0614	Seal	2
6	0615	Valve Seat*	2
7	0616	End Disk	1
8	0617	O-Ring*	2
9	0618	Cam Shaft	1
10	0621	Valve Shaft Assembly*	2
11	0622	Front Disk	1
12	0623	Lever	1
13	0624	Pin*	1
14	0630	O-Ring*	2
15	0659	O-Ring*	1
16	016-24	High Pressure Whip	1
17	016-25	Low Pressure Whip	1
18	0071	Socket Head Cap Screw 10x65 mm	4
19	0070	Socket Head Cap Screw 10x60 mm	1
20	0072	Socket Head Cap Screw 6x45 mm	1
21	0051	Handle	1



*Included in Repair Kit 07-3

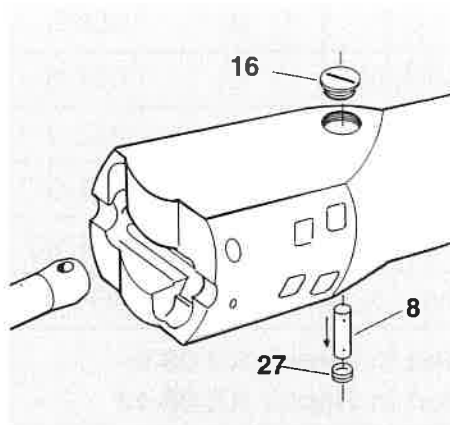
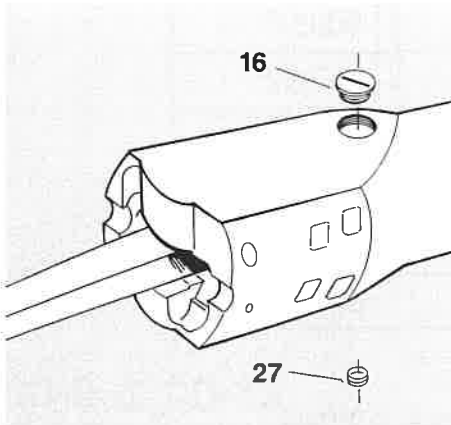


CHANGE FEATHERS:

1. Pull up both feather lock bars (21) and push plug and one feather to one side as far as they will go.

2. Grasp other feather, twist 90° and pull out.
3. Move plug to other side and remove other feather.

4. Reinstall feathers using the reverse of the above.
5. *Do not* attempt to operate the splitter with feathers unlatched.



CHANGE PLUG:

1. Extend plug fully and remove plastic plug (27) and screw plug (16).
2. Using a small pin punch, knock out plug pin (8). Pull plug straight out.
3. Reinstall using reverse of the above.